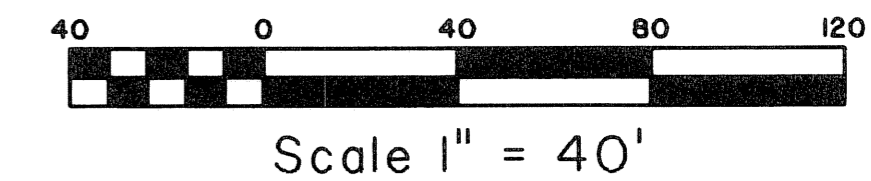


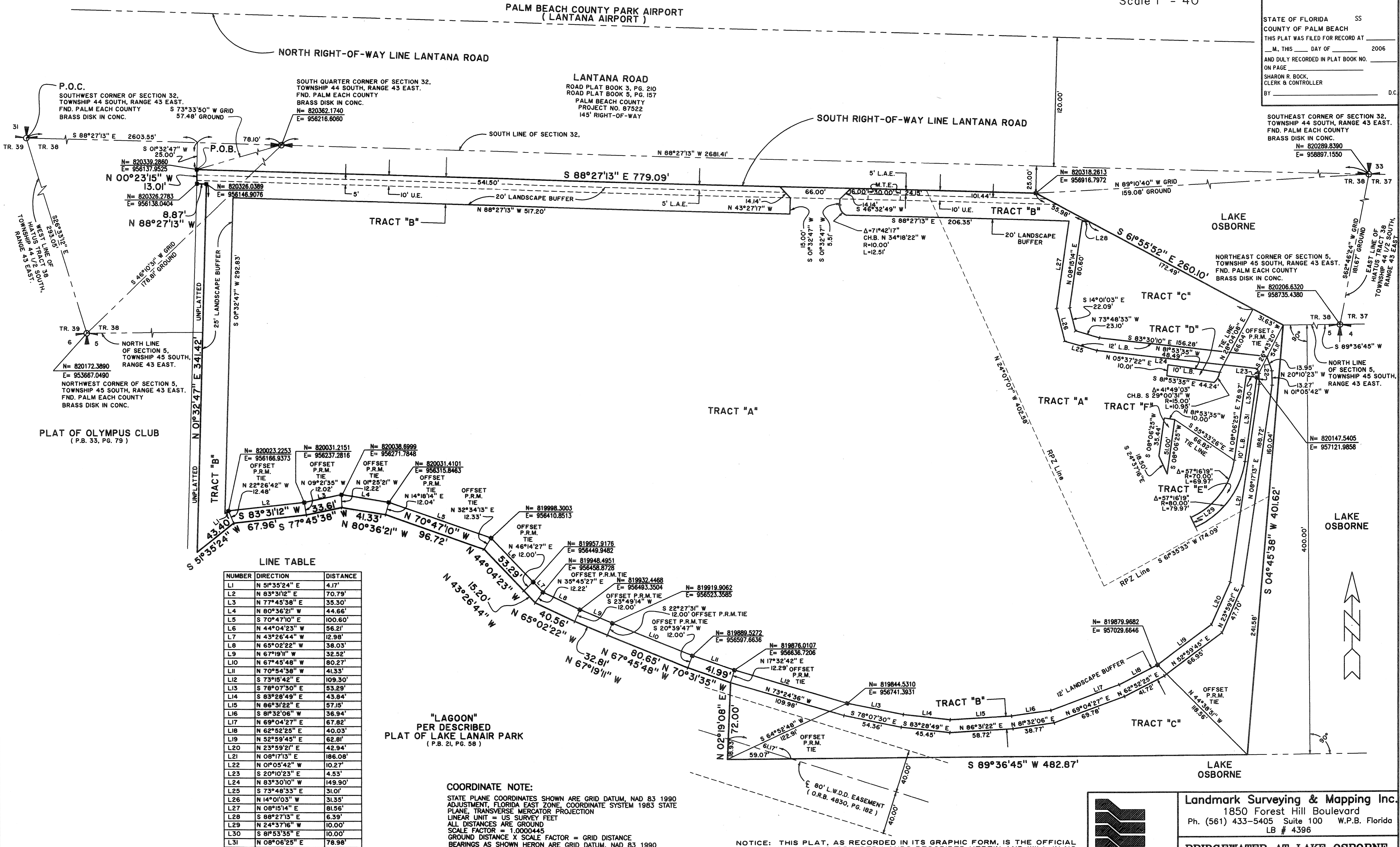
BRIDGEWATER AT LAKE OSBORNE, A P.U.D.

BEING A REPLAT OF A PORTION OF LAKE OSBORNE SUBDIVISION,
AS RECORDED IN PLAT BOOK 9, PAGES 42 AND 43, PUBLIC RECORDS OF
PALM BEACH COUNTY, FLORIDA AND A PORTION OF SECTION 5,
RANGE 43 EAST, PALM BEACH COUNTY, FLORIDA.
SHEET 2 OF 2



STATE OF FLORIDA SS
COUNTY OF PALM BEACH
THIS PLAT WAS FILED FOR RECORD AT _____
M. THIS _____ DAY OF _____ 2006
AND DULY RECORDED IN PLAT BOOK NO. _____
ON PAGE _____
SHARON R. BOCK,
CLERK & CONTROLLER
BY _____ D.C.

SOUTHEAST CORNER OF SECTION 32,
TOWNSHIP 44 SOUTH, RANGE 43 EAST.
FND. PALM EACH COUNTY
BRASS DISK IN CONC.
N= 820289.8390
E= 958897.1550



PLAT OF OLYMPUS CLUB
(P.B. 33, PG. 79)

LINE TABLE

NUMBER	DIRECTION	DISTANCE
L1	N 51°35'24" E	4.17'
L2	N 83°31'12" E	70.79'
L3	N 77°45'36" E	35.30'
L4	N 80°36'21" W	44.66'
L5	S 70°47'10" E	100.60'
L6	N 44°04'23" W	56.21'
L7	N 43°26'44" W	12.98'
L8	N 65°02'22" W	38.03'
L9	N 67°19" W	32.52'
L10	N 67°45'48" W	80.27'
L11	N 70°54'58" W	41.33'
L12	S 73°18'42" E	109.30'
L13	S 78°07'50" E	53.29'
L14	S 83°28'49" E	43.84'
L15	N 86°31'22" E	57.15'
L16	S 81°32'06" W	36.94'
L17	N 69°04'27" E	67.82'
L18	N 62°52'25" E	40.03'
L19	N 52°59'45" E	62.81'
L20	N 23°59'21" E	42.94'
L21	N 08°17'13" E	186.08'
L22	N 01°05'42" W	10.27'
L23	S 20°10'23" E	4.53'
L24	N 83°30'10" W	149.90'
L25	S 73°48'33" E	31.01'
L26	N 14°01'03" W	31.35'
L27	N 08°15'14" E	81.56'
L28	S 88°27'13" E	6.39'
L29	N 24°37'16" W	10.00'
L30	S 8°53'35" E	10.00'
L31	N 08°06'25" E	78.98'

"LAGOON"
PER DESCRIBED
PLAT OF LAKE LANAIR PARK
(P.B. 21, PG. 58)

COORDINATE NOTE:
STATE PLANE COORDINATES SHOWN ARE GRID DATUM, NAD 83 1990
ADJUSTMENT, FLORIDA EAST ZONE, COORDINATE SYSTEM 1983 STATE
PLANE, TRANSVERSE MERCATOR PROJECTION
LINEAR UNIT = US SURVEY FEET
ALL DISTANCES ARE GROUND
SCALE FACTOR = 1.0000445
GROUND DISTANCE X SCALE FACTOR = GRID DISTANCE
BEARINGS AS SHOWN HEREON ARE GRID DATUM, NAD 83 1990
ADJUSTMENT, FLORIDA EAST ZONE.

NOTICE: THIS PLAT, AS RECORDED IN ITS GRAPHIC FORM, IS THE OFFICIAL
DEPICTION OF THE SUBDIVIDED LANDS DESCRIBED HEREIN AND WILL IN NO
CIRCUMSTANCES BE SUPPLANTED IN AUTHORITY BY ANY OTHER GRAPHIC OR
DIGITAL FORM OF THE PLAT. THERE MAY BE ADDITIONAL RESTRICTIONS THAT
ARE NOT RECORDED ON THIS PLAT THAT MAY BE FOUND IN THE PUBLIC
RECORDS OF THIS COUNTY.

SUBDIVISION BRIDGEWATER AT LAKE OSBORNE
BOOK 108 PAGE 6
BLOCK ZONE 43
QUAD # 19
SE
TAX 0408
PUD NAME

Landmark Surveying & Mapping Inc.
1850 Forest Hill Boulevard
Ph. (561) 433-5405 Suite 100 W.P.B. Florida
LB # 4396

**BRIDGEWATER AT LAKE OSBORNE,
A P.U.D.**